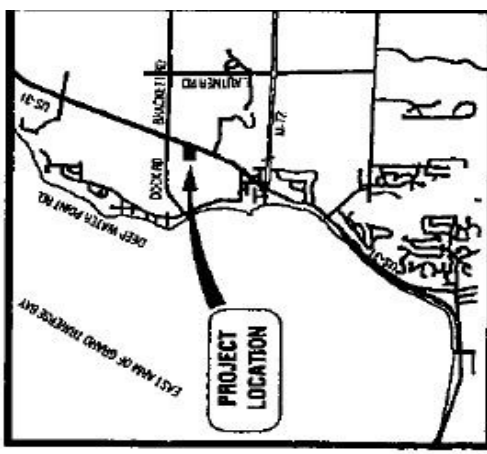


LEGEND

- MONUMENT SET
- IRON FOUND
- IRON SET
- BENCH MARK LOCATION
- MONUMENT FOUND
- MEASURED
- RECORD

(M) (R)



LOCATION MAP
NO SCALE

I, TREVOR A. MCMANN, REGISTERED LAND SURVEYOR OF THE STATE OF MICHIGAN, HEREBY CERTIFY: THAT THE SUBDIVISION PLAN KNOWN AS GRAND TRAVERSE COUNTY CONDOMINIUM SUBDIVISION PLAN NO. 310, AS SHOWN ON THE ACCOMPANYING DRAWINGS, REPRESENTS A SURVEY ON THE GROUND MADE UNDER MY DIRECTION, THAT THERE ARE NO EXISTING ENCROACHMENTS UPON THE LANDS AND MONUMENTS AND IRON MARKERS HAVE BEEN LOCATED IN THE GROUND AS REQUIRED BY RULES PROMULGATED UNDER SECTION 142 OF ACT NUMBER 59 OF THE PUBLIC ACTS OF 1978; THAT THE ACCURACY OF THIS SURVEY IS WITHIN THE LIMITS REQUIRED BY THE RULES PROMULGATED UNDER SECTION 142 OF ACT NUMBER 59 OF THE PUBLIC ACTS OF 1978; THAT THE BEARINGS AS SHOWN ARE NOTED ON THE SURVEY PLAN AS REQUIRED BY THE RULES PROMULGATED UNDER SECTION 142 OF ACT NUMBER 59 OF THE PUBLIC ACTS OF 1978.

TREVOR A. MCMANN
PROFESSIONAL SURVEYOR
LICENSE NO. 50442
123 WEST FRONT STREET
TRAVERSE CITY, MICHIGAN 49684



DATE 10/22/12

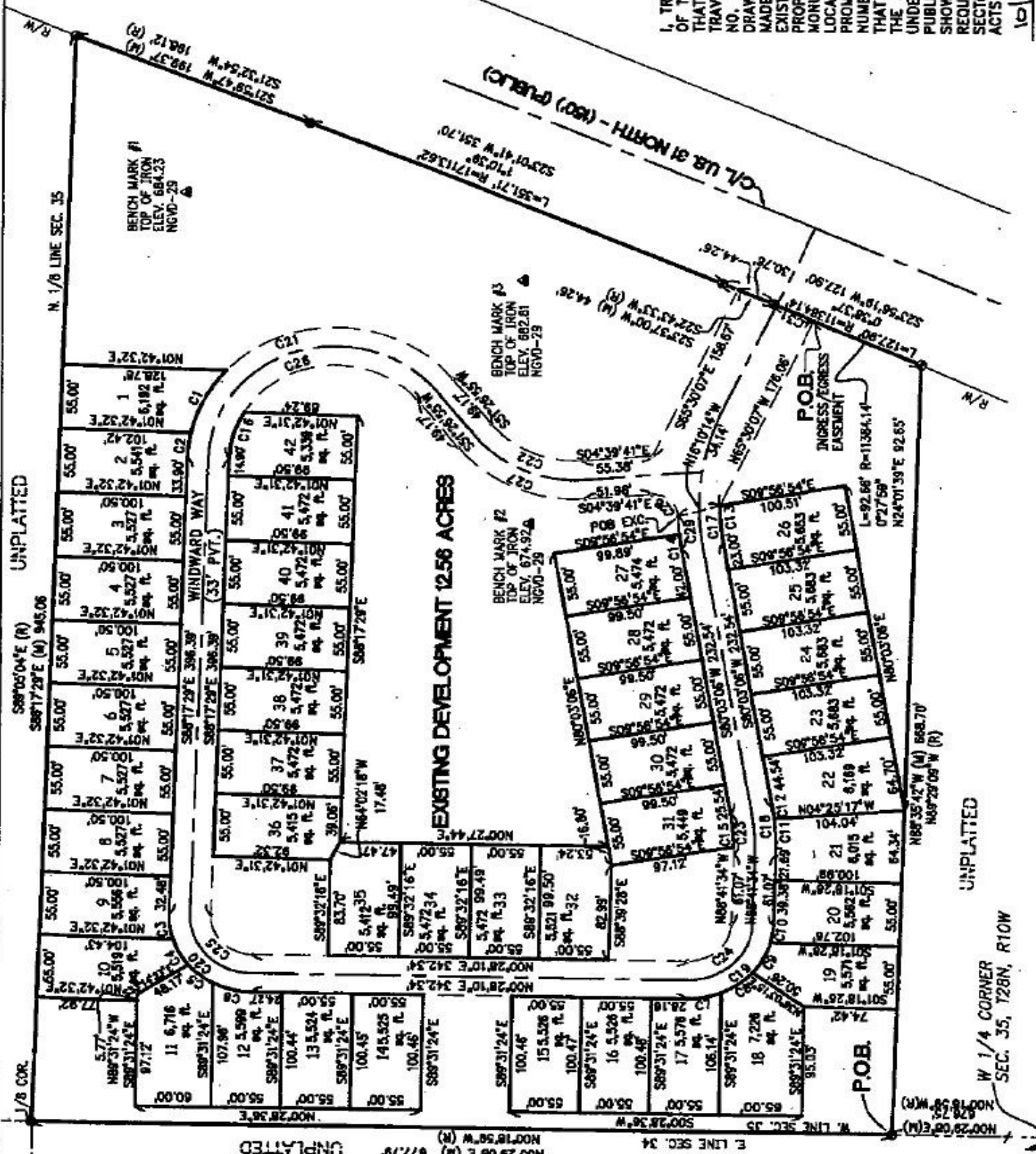
THE COTTAGES AT WINDWARD RIDGE, A SITE CONDOMINIUM
SURVEY PLAN

BEARING BASIS:
U.S. STATE PLANE ZONE 2112, NAD83
(N00°29'08" E ON NORTH 1/2 OF WEST LINE, SEC. 35, T28N, R10W)

PROPOSED
DATE 10-22-12
SHEET 2



SCALE: 1" = 40'
0' 20' 40' 120'



EXISTING DEVELOPMENT 12.56 ACRES

UNPLATTED

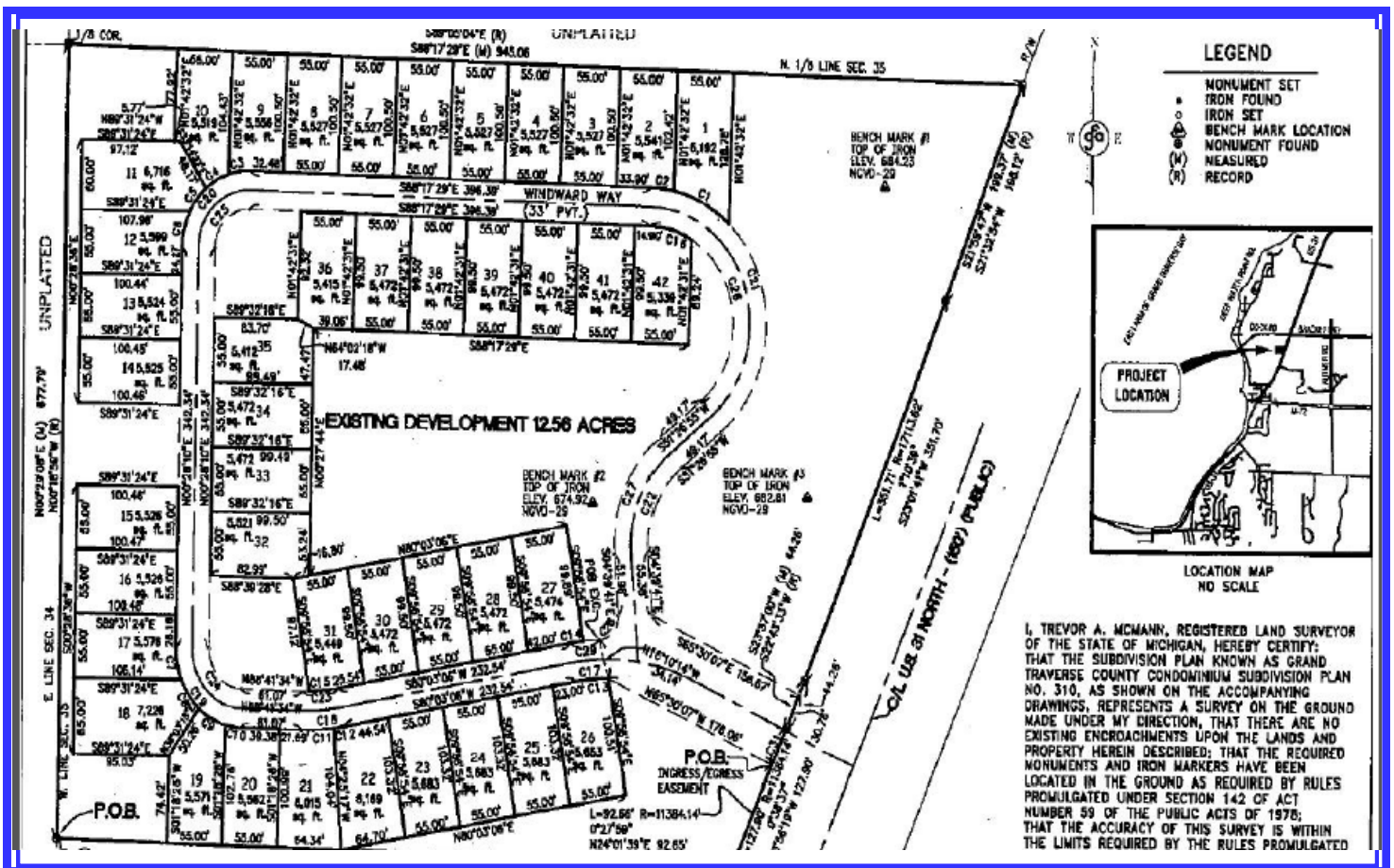
W 1/4 CORNER
SEC. 35, T28N, R10W

SCALE: 1" = 40'



Vacant Lot Pricing

1	PENDING	12	SOLD	23	SOLD	34	SOLD
2	\$54,000	13	SOLD	24	SOLD	35	SOLD
3	\$54,000	14	SOLD	25	\$54,000	36	SOLD
4	\$54,000	15	SOLD	26	\$54,000	37	SOLD
5	\$54,000	16	SOLD	27	SOLD	38	\$54,000
6	\$54,000	17	SOLD	28	SOLD	39	SOLD
7	\$54,000	18	SOLD	29	\$54,000	40	\$54,000
8	SOLD	19	SOLD	30	\$54,000	41	\$54,000
9	SOLD	20	SOLD	31	SOLD	42	SOLD
10	SOLD	21	SOLD	32	SOLD		
11	SOLD	22	SOLD	33	SOLD		



DISCLAIMER: The information contained herein and contained in any supplemental documents has been furnished by the seller and/or other sources. We believe the information is reliable.

Every effort has been made to provide accurate information. However, we are unable to guarantee the enclosed and recommend that the purchaser verify all information before closing.